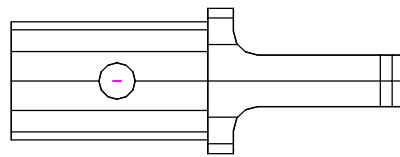
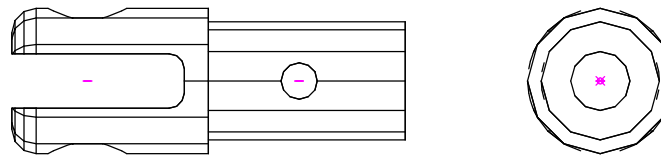


SIDE ELEVATION



END ELEVATION



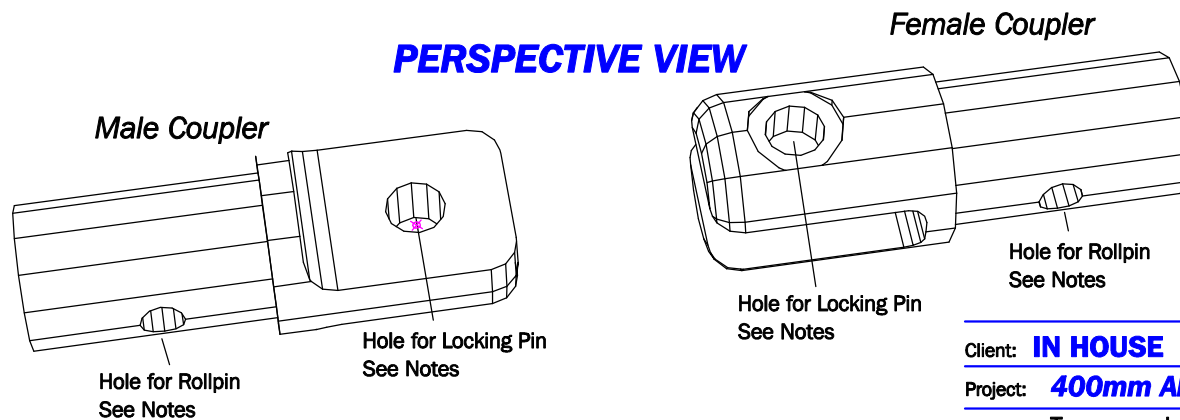
***NOTES:**

Male & Female coupling devices constructed from 48mm CSS 2011-T6 Aluminium. Lathe turned and Milled to sizes spec'd.

Couplers are permanently fixed to major chords using 1-12x50mm steel rollpin per coupler. The rollpin is inserted via 12mm holes indicated.

Joining of truss sections is achieved by the mating of male & female couplers and the insertion of 1-15.85x78mm Mild steel (Case hardened & Zinc plated) Locking pin. The Locking pin is inserted via 16mm holes indicated.

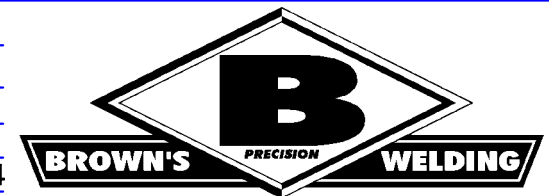
PERSPECTIVE VIEW



Scale in Centimetres

Last Revised 09/04/2001
Text and Baseplate update & software ver.

Client: **IN HOUSE**
Project: **400mm Alloy Box truss**
Drawing: **Truss couplers material spec./Dims FINAL**
Drawing Details: **Plan, Side & End elev. and Perspective**
Scale: **SEE DRAWING** Drawing No: **001-B 2of4**
Version: **2.0** Date: **18/04/1998**
Drawing Name: **COUPLERS.DWG (Plate 1)**
Drawing by: **Beau Southey**



138 - 146 Brown's Road Noble Park Victoria 3174
Tel: 613 9701 2355 Fax: 613 9701 2511 Mob: 0409 413 908

THIS DRAWING AND ALL ASSOCIATED FILES REMAIN THE STRICT PROPERTY OF BROWN'S PRECISION WELDING Pty. Ltd. NOT TO BE REPRODUCED IN ANY FORM, WITHOUT THE EXPRESSED PERMISSION OF BROWN'S PRECISION WELDING Pty. Ltd. COPYRIGHT 2001.