

ENTTEC

Entertainment Technology

Using Datagate with Grand MA Consoles

The Perfect match

The Datagate DME is a perfect match for the range of Grand MA lighting consoles, as it enables you to take full advantage of the 4096 DMX channels on offer. The Grand MA and Grand MA Light desks have 4 standard 5-pin DMX outputs, but up to 8 DMX Universes can be output via Ethernet, using a variety of protocols including the popular Art-Net.

The Datagate fully supports the Art-Net protocol, and can be configured to output anywhere between 1 and 8 DMX Universes. It also has the added advantage of opto-isolation between its 8 DMX outputs (up to 1500 Volts). If a dangerous voltage were to get onto a DMX line, the Datagate will protect the rest of your equipment on the other lines, and keep working.

How do I configure the Datagate?

4-Port DMX

To set the Datagate to output 4 Universes of DMX, hit the 'Menu' button next to the LCD display on the Datagate's front panel until it displays "1-Activate Profile". Hit 'Enter' then 'Scroll' until the Art-Net profile is displayed. Hit 'Enter' to select, and the Datagate will display "Profile Activate". The Art-Net profile configures ports 1- 4 as Outputs for DMX Universe 1-4, and ports 5-8 as DMX Inputs.

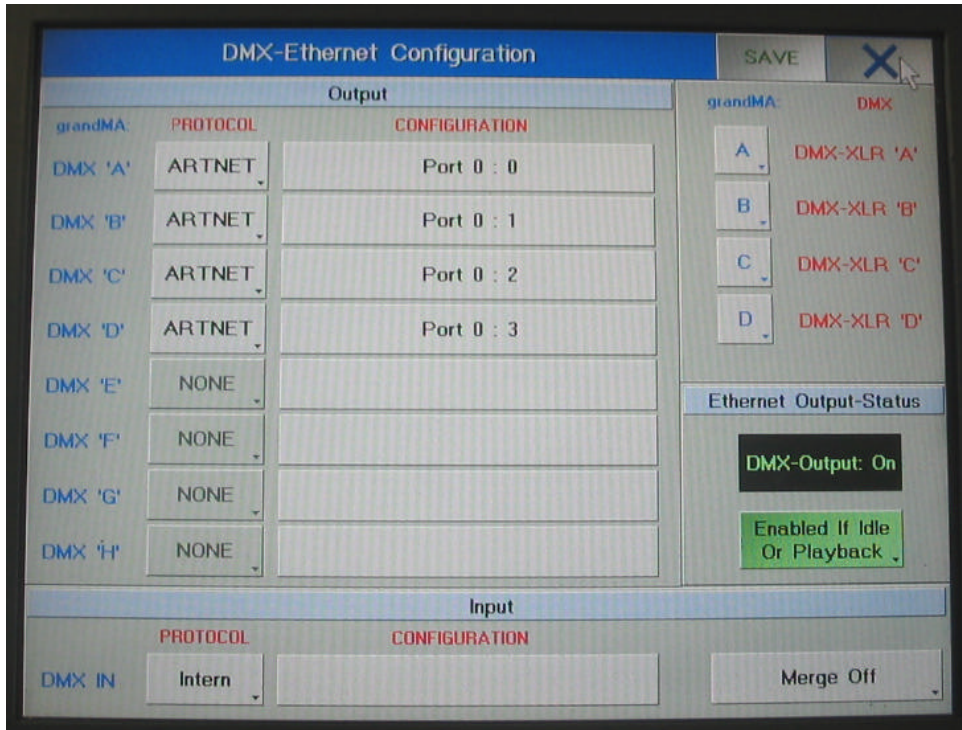
8-Port DMX

To set the Datagate to output 8 Universes of DMX, follow the instructions above to access the "1-Activate Profile" menu on the Datagate. Select the "Enet -> DMX" profile, then change the protocol type on each of the 8 channels to Art-Net instead of the default ESP. This will give you 8 output ports. To change the protocol type, hit the 'Menu' button until it displays "2-Edit Profile", hit 'Enter' then 'Scroll' until the display reads "2-3 Ethernet Config". Hit 'Enter' again, then 'Scroll' until "2-3-2 Protocol" is displayed. Hit 'Enter', then 'Scroll' until the display reads "Art-Net", then hit 'Enter' once more.

This will set the Datagate to output DMX Universes 1-8 on Ports 1-8.

How do I configure the Grand MA?

On your Grand MA, go to the 'Setup' and 'DMX Ethernet Configuration' menu.



Change the protocol to Art-Net and then change the outputs to Port 0:0, Port 0:1, Port 0:2, Port 0:3, etc, up to a maximum of 8 DMX outputs.

Once you have configured as many DMX outputs as you require, simply save your changes, and your Datagate will output up to 8 optically-isolated streams of DMX!

We used a Lil'DMXter to measure the output of the Datagate, ensuring it worked flawlessly with the Grand MA.



The display on the Datagate can also give you an instant overview of its configuration and data flow, helping you keep track of which universe is being sent where. With multiple DMX Universes being sent down the same wire in Ethernet systems, this feature will help keep debugging time to a minimum.